

## **Cancer and Nutrition FAQ**

### **Why do pets with cancer need a special diet?**

Cancer is challenging your pet's immune system. Treatment for cancer further challenges their immune system. Proper nutrition supports their body's functions and allows for healing. Without proper nutrition, the body may use stored fat and nutrients to support itself, further weakening your pet.

Protein is dense in vitamins, minerals, and nutrients and is necessary for your pet to fight cancer and heal. We need to focus your pet's diet toward a protein heavy diet while they are fighting cancer. If your pet has other medical issues, such as a history of pancreatitis or kidney disease, it is important to discuss this with us so that we can help advise you.

### **Are carbohydrates bad for my pet?**

While it is true that tumor cells get their energy from glucose, not all carbohydrates are equal. We recommend that you keep the amount of glucose down, while providing your pet with carbohydrates that also rich in nutrients.

Grains tend to be the most difficult carbohydrate to digest. This means they are often not broken down fully by the intestinal system and therefore don't easily deliver their nutrients. Additionally, they generally contain high amounts simple carbohydrates. We recommend that they be should be kept to a minimum in cancer patients unless your pets other medical conditions require an altered diet (pancreatitis, kidney disease, etc.). Some vegetables should also be kept to a minimum because the body easily breaks them down into simple sugars. Among them are: potatoes, peas, corn, and carrots.

Dogs are omnivores, meaning they eat meat and plant material. The carbohydrates to focus on including in your dog's diet add high levels of nutrients other than glucose. Try mixing and matching various vegetable to see what your dog prefers. Some great options are shiitake mushrooms, kale, broccoli, brussels sprouts, red or yellow bell peppers, and pumpkin or butternut squash. Frozen vegetables are fine and after cooked you can puree them or just chop, cook, and add them to your dog's food.

Cats are obligate carnivores. They cannot live on a diet without taurine and arginine (both found in uncooked meat) or they will die. Cooking destroys the majority of these essential amino acids. If your cat is eating a commercial cooked diet (canned, kibble, or freeze-dried), it will have these nutrients added. If you are cooking food for your cat you must add Rx Feline Minerals to the food. Cats require fewer vegetables than dogs. You can try pumpkin or squash in small amounts. If your cat likes other vegetables, there is no harm in giving them, just focus on the same type you would give a dog (see above).

### **Should I feed raw or cooked food?**

If your dog has been doing well on a carefully balanced raw diet, we don't see any reason to change it. Some pets with cancer or while going through chemotherapy will require food that is less challenging to their gastrointestinal systems. If that is the case with your pet, consider gently cooking the raw food meal they are used to.

If your pet has been getting cooked food (canned, kibble, etc.) and you are interested in trying a raw food diet, we have no objections. The staff at Marty's Meals are an amazing resource and we recommend that you visit them for advice on your options and how to transition your pet to the new diet.

Regardless of whether you choose raw or cooked, you must feed your pet a well-balanced diet. We recommend following recipes for home cooking that come from knowledgeable and reputable sources, and adding in Rx Minerals for cats and dogs (ask and we can tell you more about this product) to ensure that all of their mineral and vitamin requirements are being met.

## What are my food options?

### Home cooking

Some of our clients prefer home cooking. Home cooking can be fantastic or bad for your pet. It must be done with care. We recommend following a recipe from a reputable source. Dr. Dressler has given a lot of attention to homemade diets for dogs. You can find recipes in his pdf *The Dog Cancer Diet* (<http://cancer.landofpuregold.com/the-pdfs/DogCancerDiet.pdf>). Dr. Silver, the veterinarian who helped design Rx Minerals, has both dog and cat diets on his website <http://nurseyourpet.com/home-prepared-diets-for-your-dog-or-cat-with-cancer/>. Dr. Basko has published a book (available in print or as an ebook entitled *Fresh Wisdom and Ancient Food*. You can find more about it on his website <http://www.drasko.com/site/freshfoodbook/>

We recommend using high quality, grass fed meat to minimize your pet's exposure to omega-6 fatty acids. Grass fed meat has a much higher level of omega 3 fatty acids and that's what we want!

Always avoid onions, garlic (in cats), macadamia nuts, xylitol, chocolate, raisins, and grapes!

**Purchase raw (frozen) food** – Marty's Meals is a great resource. Please visit them to discuss your options. There are also high quality frozen foods sold at many pet stores. We highly recommend that you pay attention to how to handle frozen foods safely for both you and your pet's protection.

**Purchase dehydrated food** – We like the food made by Honest Kitchen, but there are other high quality brands available. These are easy to make with just hot water and most pets seem to enjoy them.

**Purchase canned food or kibble** – Because of the way kibble is manufactured, it is the highest carbohydrate option. Look for the highest protein available and for recipes with meat as the first ingredient. We are lucky to live in a time when there are a lot of higher quality kibbles and pet food stores that have staff educated on protein vs. carbohydrate content. Don't be shy about telling them your pet's condition and asking if they have kibble recommendations. Consider using either canned food or kibble as a base food rather than the sole source of nutrition. You can supplement with any of the above diets or by adding some of the treats and other goodies mentioned below.

### Are there great treats or foods to supplement my pet's diet?

Canned sardines – A great source of omega-3 fatty acids which have been shown to shrink tumors and decrease general inflammation, and zinc. Should you supplement with fish oil? You can, but quality is everything! Fish oil that is poorly manufactured or old can be rancid (rancid oil can cause inflammation!) or contain high levels of heavy metals.

Shiitake mushrooms – Contain polysaccharides, especially Lentinan, which is a powerful immunity builder.

Eggs – Cooked eggs are a great source of protein for both cats and dogs. Free range eggs have high levels of omega-3 fatty acids, the type of omega fatty acids that we need to focus on increasing.

Unbleached green tripe (find this at Marty's Meals) A great source of probiotics!

Kale or other dark leafy greens – Compounds in kale and other cruciferous veggies may help protect cells from DNA damage, help inactivate carcinogens, cause cell death (apoptosis), inhibit tumor blood vessel formation, inhibit tumor cell migration and have general anti-inflammatory effects.

Butternut squash or pumpkin – A source of beta carotene, fiber, folic acid, magnesium, and potassium.

Fat – Avoid seed oils (canola, sunflower, grapeseed etc.) as they increase inflammation in the body. Opt for coconut oil or animal fats when necessary for cooking.

**How do I transition my pet to a new diet?**

Slowly and monitor their response. Gradually replace their old food with new foods over the course of approximately 2 weeks. If they have a negative response – gas, bloating, vomiting, diarrhea – reduce the amount of the new food and let us know.

**How much of the new diet do I feed?**

Start by following guidelines on packaging or in the recipe. The best tool is to regularly monitor their weight. Even pets with cancer can become obese. This is unhealthy for any pet. If you are having trouble keeping your pet at a healthy weight, begin starting a journal recording amounts, including snacks and discuss possible changes with us.

**Resources to learn more**

<http://cancer.landofpuregold.com/the-pdfs/DogCancerDiet.pdf>

<http://nurseyourpet.com/home-prepared-diets-for-your-dog-or-cat-with-cancer/>

<http://nurseyourpet.com/what-sort-of-foods-are-best-for-my-pet-with-cancer/>

<https://www.dogcancerblog.com/blog/diet-and-dogs-with-cancer/>

<http://www.drBasko.com/site/freshfoodbook/>

The Dog Cancer Survival Guide by Demian Dressler, DVM

Fresh Wisdom and Ancient Food by Ihor Basko, DVM

⊥ ⊥

**We are happy to look at the food you have decided to feed your pet. Please bring in a picture (of the bag, box, or can), or the recipe and we will let you know what we think!**



VETERINARY  
CANCER CARE

Integrative Veterinary Wellness  
Veterinary Cancer Care, P.C.  
[www.ivetwellness.com](http://www.ivetwellness.com)  
[www.vetcancer care.com](http://www.vetcancer care.com)

## Artemisinin

Artemisinin is an herb that helps kill cancer cells in the body. It may be used in conjunction with chemotherapy. It may be used before radiation treatments, but should be discontinued when starting radiation therapy, and not resumed until two months after the last radiation treatment. Dosages for each individual dog are usually determined by the owner with the help of his or her veterinarian, oncologist, or by consulting one of the sources at the end of this article. It is given **away from** food or supplements containing iron, and is cycled, that is given for a number of days, and then not given for a number of days. It has been used for years as an anti-malarial drug, and does not have toxic side effects at the doses recommended. It may decrease the effectiveness of seizure medication. One should monitor blood chemistry, kidney and liver enzymes, while on this drug, as with most other medications.

More information, including suppliers and researchers willing to consult about the drug with you or your veterinary practitioner are in the following article.

### WHAT IS ARTEMISININ

Artemisinin is an herbal drug that has been shown to kill human and canine cancer cells in the laboratory. It is also being used to treat people and dogs with cancer.

It has been an effective anti-malarial drug in Asia for decades, so there is long standing knowledge about its effects and side effects. It works because the malaria parasite collects iron from the blood and stores it. The Artemisinin converts the collected iron into a chemical that releases a free radical, which then kills the malaria parasite.

It is one of four compounds derived from the herb *Artemisia annua* L., also known as sweet wormwood, annual wormwood, or sweet Annie. (It is not the same plant as perennial wormwood.)

### HOW DOES IT WORK ON CANCER?

Cancer cells also collect and store iron because they need extra iron to replicate DNA when they divide. Therefore, the cancer cells have a higher concentration of iron than

normal cells, and can be differentiated from normal cells. Two researchers at the University of Washington in Seattle, Professors Henry Lai, PhD and Narendra Singh, MBBS, began to study the use of Artemisinin in human patients. Then, in 1999, working with a vet, they began to study its use in dogs with cancer.

Their experience has confirmed that Artemisinin helps stop the growth of cancer cells in dogs. Numerous anecdotal reports from people using Artemisinin for dogs with osteosarcoma, lymphoma, and metastases from osteosarcoma claim that it has extended their dogs lives beyond what was expected.

## **ARTEMISININ DERIVATIVES**

Artemisinin has two derivatives: Artesunate, which has a relatively short half-life; and Artemether, which may be a more effective derivative, because it stays in the body longer. It also may be more effective than Artemisinin alone in brain cancers, because it penetrates the blood-brain barrier more readily.

A product called Artemix is available from Wellcare Pharmaceuticals. It contains Artesunate, Artemether, and Artemisinin. The combination capsule may be more effective than Artemisinin alone.

## **HOW TO GIVE ARTEMISININ:**

**Each person needs to determine the amount and frequency of giving Artemisinin and its derivatives to his or her dog, taking into account how the dog responds to the treatment, and other factors. Your holistic or conventional veterinarian or oncologist may be willing to help you with this.**

## **SIDE EFFECTS**

**Reported (Oral):** Artemisia may cause abdominal pain, bradycardia, diarrhea, nausea, vomiting, decreased appetite, flu-like symptoms, fever, and decreased reticulocyte count. (Bradycardia is a resting heart rate of 60 beats or less.)

## **RADIATION**

Radiation releases iron stored in cancer cells into surrounding tissue. Therefore, it is recommended that it be used before radiation treatments, be discontinued during radiation treatments, and not resumed until two months after the last radiation treatment.

## **CHEMOTHERAPY**

Artemisinin was tested in combination with 22 chemotherapy drugs and was found to enhance the drugs' effectiveness. If used in conjunction with chemotherapy, it should be taken several hours after the chemotherapy treatment ends. (Artemisinin does not alleviate possible chemotherapy side effects.)



Integrative Veterinary Wellness  
Veterinary Cancer Care, P.C.  
[www.ivetwellness.com](http://www.ivetwellness.com)  
[www.vetcancercare.com](http://www.vetcancercare.com)

## **CURCUMIN (MERIVA™ from Thorne Research)**

Curcumin complexed with phosphatidylcholine for superior bioavailability\*

- for maintenance of the body's normal inflammatory response\*
- provides potent antioxidant and hepatoprotective activity\*
- sustained-release formula allows for an optimal curcumin blood level over time\*
- significantly increased bioavailability from phytosome preparation\*

Meriva-SR is a unique, patented time-release curcumin product available exclusively from Thorne Research. People throughout Asia have benefited from the healthful effects of curcumin for centuries. Curcumin is the orange pigment in turmeric (the primary ingredient in curry), and is a potent antioxidant that offers numerous health benefits, including supporting joint health and cardiovascular function, and helping to maintain the body's normal inflammatory response.\*

Whether taken as a supplement or from food, curcumin is generally poorly absorbed into the bloodstream. In conjunction with Indena S.p.A., the worldwide experts in botanical extract technology, we have uncovered the key to curcumin absorption - phytosome technology. Meriva Curcumin Phytosome is a unique curcumin extract that is significantly better absorbed than other curcumin extracts.

Phytosomes are plant extracts bound to phosphatidylcholine (PC), an essential component of human cells. Our bodies can make PC, but we can also get it from food or supplements. When taken orally, PC is very well absorbed. The scientists at Indena found a way to attach a curcumin extract to PC for superior absorption, resulting in Meriva™. When you take Meriva™ your body absorbs the PC and the attached curcumin, resulting in more curcumin reaching the cells that can benefit from it.\*

A 2007 study published in the journal, *Cancer Chemotherapy and Pharmacology*, demonstrated Meriva's superior bioavailability compared to ordinary curcumin. This animal study indicated a significantly greater plasma concentration time curve, with an area under the curve (AUC) five times higher for Meriva.

Liver levels of curcumin were also higher with Meriva supplementation. A recent human study (not yet published) demonstrated even greater bioavailability.

Meriva supplementation resulted in significantly better absorption, with better plasma concentrations of curcumin from a much smaller dose than with ordinary curcumin.

Several studies have illustrated curcumin's hepatoprotective effects, leading researchers to suggest its use in protecting the liver from exogenous insults from environmental toxins, such as acetaminophen and carbon tetrachloride.\*

Curcumin also has the capacity to increase both the flow and solubility of bile.\* Curcumin's hepatoprotective effects are due in part to direct free-radical scavenging; but curcumin also enhances the body's natural antioxidant system, which increases glutathione levels, thereby aiding in hepatic detoxification and inhibiting nitrosamine formation.\*

©2009 Thorne Research Inc. All Rights Reserved.



VETERINARY

Veterinary Cancer Care, P.C.

2001 Vivigen Way

Santa Fe, NM 87505

www.vetcancercare.com

Phone: (505) 982-4492 Fax: (505) 982-1701 info@vetcancercare.com

## MEDICINAL MUSHROOMS

### *What are medicinal mushrooms?*

There are an estimated 140,000 species of mushrooms in the world, and only an estimated ten percent of them have been characterized. They are thus one of the great untapped resources in botanical medicine, especially when it is considered that their chief medicinal effects are against the diseases that concern us most, including cancer. The most commonly used species include Reishi (*Ganoderma lucidum*); Shiitake (*Lentinula edodes*); Cordyceps (*Cordyceps ophioglossoides*), often referred to as Caterpillar Fungus and Deer Antler Fungus; and Maitake (*Grifola frondosa*, *Polyporus umbellatus*, *Grifola umbellatus*, and *Boletus frondosus*).



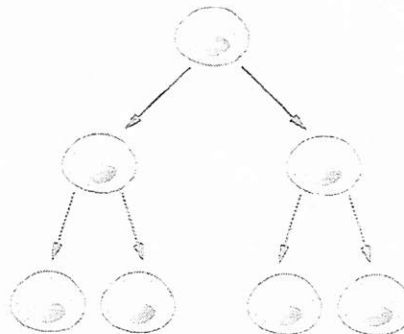
The main ingredients in medicinal mushrooms that exert this anti-cancer and immune stimulating effect are immune polysaccharides, also known as beta-glucans. The larger the size of the beta-glucan molecule, the stronger its effect, which is exerted chiefly through T cells and the cell-mediated immune system. If a patient does not have an intact cell-mediated immune system, medicinal mushrooms may be ineffective.

In medical research, beta-glucans are often extracted and chemically modified to enhance their chemical activity, suggesting that standardized extracts may be more effective than the intact mushroom in many cases. The extracts of interest include PSK (krestin), schizophyllan and lentinan. Other extracts will likely also be developed.

Their activity is especially beneficial in clinics when used in conjunction with chemotherapy. Mushroom polysaccharides prevent production of tumors, show direct anti-tumor activity and prevent tumor metastasis (spreading). Polysaccharides from mushrooms do not attack cancer cells directly, but produce their anti-tumor effects by activating different immune responses in the host.

### *Why recommend administration of medicinal mushrooms to my pet?*

Medicinal mushrooms are currently most often used clinically in the treatment of cancer. In humans, they are used as an adjunct with chemotherapy, with some species helping to prevent the common side effect of bone marrow suppression. Mushroom extracts are



Cell Division



also anti-cancer in their own right, preventing the development and spread of some tumors and killing others. Which tumors are affected depends on the species of mushrooms being used. Efforts are currently being made by researchers to establish a database of all mushrooms and their effects.

Clinical trials of the use of mushrooms in animals or humans to treat cancer or stimulate the immune system are still lacking. In the meantime, the basic indications for mushrooms in humans have been extrapolated to animals, with mushrooms in general being used to boost an animal's immune system. Cordyceps also has a dilating effect on the bronchii (main airways of the lungs) and a cough suppressant effect, which has led to its use in a wide variety of small animal respiratory disorders including feline asthma and canine tracheobronchitis (kennel cough). Mushroom extracts probably constitute one of the most commonly used herbal supplements in veterinary medicine.

#### ***How safe are medicinal mushrooms?***

In people and pets, medicinal mushrooms appear to be extremely safe. Occasional side effects include mild digestive upset, dry mouth, and skin rash; these effects resolve immediately upon discontinuation of use. Some species have anticoagulant (anti-clotting) properties, but their clinical significance in actually producing bleeding seems very low, although some authors recommend they should not be combined with drugs such as warfarin or heparin. Safety in young children, pregnancy, severe liver or kidney disease has not been established. Using some species of medicinal mushrooms for severe bleeding have not been reported in the clinical literature in pet medicine when treating dogs and cats.



#### ***Where do I obtain medicinal mushrooms and do I need a prescription?***

Your veterinarian may have preferred supplements that he or she will recommend. Pet owners are cautioned against buying supplements without knowledge of the manufacturer, as supplements are not highly regulated and some supplements may not contain the labelled amount of ingredients. A prescription is not needed for medicinal mushrooms.

1



VETERINARY  
cancer care

Veterinary Cancer Care P.C.

2001 Vivigen Way

Santa Fe, NM 87505

www.vetcancercare.com

Phone: (505) 982-4492 Fax: (505) 982-1701 info@vetcancercare.com

## GLUTAMINE

### ***What is glutamine?***

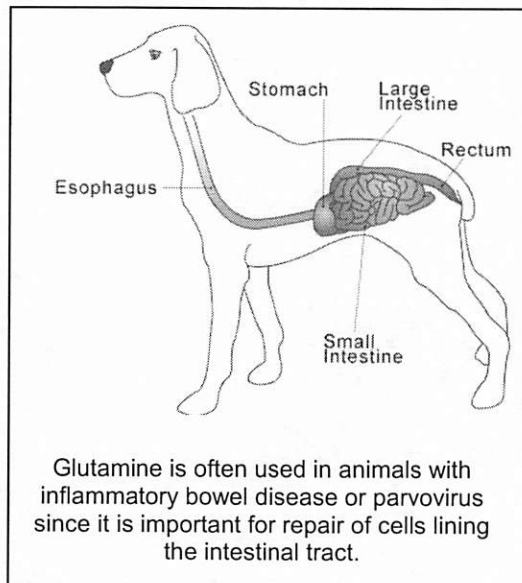
Glutamine, or L-glutamine, is a conditionally essential amino acid in humans. It is found in fairly high levels in dairy and meat products. Normally, it can be synthesized from another amino acid, glutamate, in adequate quantities. Glutamine must be included in the diet during conditions of extreme stress, such as injury, septicemia, burns and inflammatory bowel disease.

Glutamine is the most abundant amino acid in the skeleton, muscle and blood. Glutamine reaches levels in the brain about 15 times greater than those of the blood, and is used as both fuel and a neurotransmitter. Glutamine is also the preferred energy source of the cells lining the digestive tract, especially in disease states.

The high levels of glutamine in the blood and intestinal lining reflect its importance in cell division. For this reason, glutamine is also essential to support normal wound repair. Glutamine levels are generally reduced in cancerous states, and even lower following chemotherapy. Consequently, glutamine supplementation is employed in cancer treatment in humans. As a bonus, it seems to protect normal cells from the effects of chemotherapy but enhance the die-off of cancer cells.

### ***Why recommend administration of glutamine to my pet?***

Glutamine is often recommended for pets with chronic bowel disorders including inflammatory bowel disease and parvoviral enteritis, since it is the preferred fuel source of damaged intestinal epithelial cells. Strenuous exercise, infection, surgery, and trauma can also deplete the body's glutamine reserves, particularly in muscle cells. Glutamine may reduce the gastrointestinal toxicity of some chemotherapy drugs and may minimize inflammation of the intestinal tract caused by radiation therapy. It may be a useful adjunct treatment for pets with suspected leaky gut syndrome, where increased intestinal permeability can lead to the development of food allergies or intolerances.

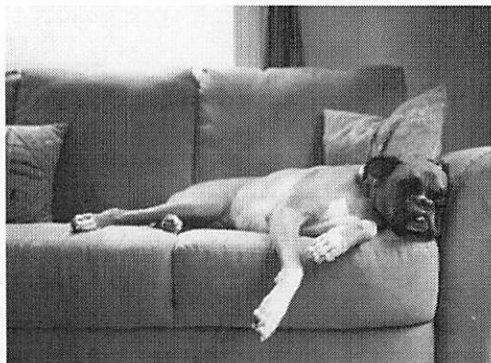


### ***How much experience is there with the use of glutamine in pets?***

Glutamine has been used relatively extensively in humans, dogs, and cats. Most studies suggest glutamine supplementation is beneficial to patients while others have demonstrated no benefit. Clinical trials in animals are lacking.

### **How safe is glutamine?**

Glutamine, as one of the body's main amino acids, is thought to be a safe supplement when taken at recommended dosages. High dosages of glutamine may pose a risk to pets with epilepsy. If your pet is taking anti-convulsant medications, glutamine should only be used under veterinary supervision.



### **Where do I obtain glutamine and do I need a prescription?**

Your veterinarian may have referred supplements that he or she will recommend. Pet owners are cautioned against buying supplements without knowledge of the manufacturer, as supplements are not highly regulated and some supplements may not contain the labeled amount of ingredients. A prescription is not needed for glutamine. The recommended a dosage of 3,800mg per 50# of body weight once daily.

---

*This client information sheet is based on material written by Steve Marsden, DVM ND MSOM LAc DiplCH AHG, Shawn Messonnier, DVM and Cheryl Yuill, DVM, MSc, CVH.  
© Copyright 2004 Lifelearn Inc. Used with permission under license. September 1, 2020.*

# The Endocannabinoid System (ECS)

## Brain

- Learning, memory, cognition
- Motor control
- Anxiety & depression
- Appetite and food
- Reward and addiction
- Neuroprotection
- Neural development
- Sleep

## Cardiovascular System

- Negative inotropy
- Vasodilation
- Cardiac function

## Liver

- Ascites formation
- Lipogenesis
- Fibrosis
- Insulin resistance

## GI Tract

- GI motility
- Enteroendocrine function
- Intestinal barrier function
- Energy balance

## Skeletal Muscles

- Energy metabolism
- Muscle fiber formation

## Reproductive System

- Fertility regulation
- Embryo implantation
- Embryonic development

- Nociception
- Immune modulation
- Nausea & emesis
- Intraocular pressure
- Bone remodeling
- Bronchodilation
- Cancer
- Etc.



**COMPANIONCBD™**  
Hemp Products for Pets and their People.

CompanionCBD, LLC • [www.companioncbd.com](http://www.companioncbd.com)



**VETERINARY**  
cancer care PC.

[www.vetcancer.com](http://www.vetcancer.com) • 2001 Vivigen Way, Ste. B, Santa Fe, NM 87505 • (505) 982-4492



VETERINARY  
CANCER CARE

Veterinary Cancer Care, P.C.

2001 Vivigen Way

Santa Fe, NM 87505

[www.vetcancercare.com](http://www.vetcancercare.com)

Phone: (505) 982-4492 Fax: (505) 982-1701 [info@vetcancercare.com](mailto:info@vetcancercare.com)

## **ONCOSUPPORT**

### ***What is OncoSupport?***

OncoSupport is a complex nutraceutical and botanical dietary supplement designed to provide nutritional support for conditions of the immune system. Veterinary patients suffering from chronic disease conditions (such as neoplasia, chronic infections and immune-mediated disorders) can benefit from taking the condition specific formulation.

### ***How is OncoSupport delivered?***

Provided in an easy to administer, highly palatable powder, OncoSupport is administered twice daily, mixed with the patient's moistened dry food, canned or homemade diet. Years of use of this formula's unique combination of nutraceuticals and botanical extracts in clinic support the effectiveness, safety and absence of adverse side effects when administered according to directions.

The combination of botanicals and nutraceuticals in this formula synergistically support healthy immune system function by providing micro-nutritional factors that are not commonly part of the veterinary patient's nutritional intake. Bio-active phytonutrients, combined with specialized human pharmaceutical grade nutraceuticals function as biological response modifiers (BRM) that increase patient vitality as well as improved immune system resistance.

### ***How safe is OncoSupport?***

The efficacy and safety of the ingredients in this formula are well supported by scientific research. Well designed, blinded and placebo controlled clinical trials in the veterinary realm have not yet been published in the world literature.

#### **Uses:**

- Any condition of the immune system
- Chronic infection (viral, fungal, bacterial)
- Chronic inflammatory conditions
- Neoplastic conditions
- Concurrent use with chemotherapeutic agents to enhance clinical outcomes
- Concurrent use with chemotherapeutic agents to reduce chemotherapy toxicity and gastrointestinal side-effects
- Chronic organ disease
- Poor appetite
- Low energy

## ***What is the OncoSupport protocol?***

### **Therapeutic Strategy:**

- Provide nutrient diversity to support increased metabolic needs of the patient with chronic disease
- Support systems of liver detoxification
- Support normalization of bowel's selective barrier function
- Improve immune system function through a variety different pathways
- Provide anti-oxidants to reduce oxidative stress in the patient
- Improve patient quality of life through enhancement of positive cytokine and Interleukin systems

© 2014 - Content provided by RxVitamins



VETERINARY  
CANCER CARE

**Integrative Veterinary Wellness  
Veterinary Cancer Care, P.C.**

[www.ivetwellness.com](http://www.ivetwellness.com)  
[www.vetcancercares.com](http://www.vetcancercares.com)

### **Yunnan Baiyao**

**Yunnan Baiyao**(云南白药) also known as **Yunnan Baiyao**, has been extensively used in Asia for many years and is considered a sort of miracle drug for wounds, pain, and hemorrhage. It is famous for being carried in their first aid kits by the Vietcong during the Vietnam War. It has been used by Chinese soldiers for hundreds of years. In China, its reputation is similar to that of Penicillin in the U.S.

It is useful for any type of open wound and any kind of surgery. It reduces recovery time for surgery by half because it mends injured blood vessels. It does not interfere with Western sedative drugs, so can be used the same day as surgery. By immediately activating blood circulation, it helps resolve bleeding, pain, and swelling. It heals oozing wounds and damaged blood vessels, while expelling pus and counteracting toxins.

Although the ingredients are still secret, the two main herbs are raw and steamed tienchi ginseng. The raw form is cooling, the steamed form is warming. It is the combination of the two forms, along with other herbs, that make Yunnan Baiyao a balanced and powerful "drug" for pain and injury.

Its primary application is acute traumatic bleeding, where the powder is applied directly to the cut. The product is antibacterial as well as homeostatic. It is taken internally to inhibit internal bleeding due to trauma, surgery or cerebral hemorrhage.

Unlike Western pain drugs, it does not turn off pain centers in the brain, but instead facilitates circulation, bringing oxygen to the injury. Cuts heal quickly with even a single application, and with a butterfly bandage it can help seal smaller wounds that might otherwise require stitches. In various clinical studies, it has shown to **reduce clotting time by 33% to 55%**.

It is also used for traumatic swelling or bruising, or for other blood disorders including thrombocytopenic purpura, hemangiosarcoma and leukemia.

#### **TCM analysis:**

Stops bleeding, dispels blood stasis, disperses swelling, clears heat, resolves toxins, relieves pain.

Ingredient lists may vary. The exact formula is a closely guarded secret. The primary ingredient is Notoginseng.

# Rx Vitamins<sup>®</sup>

## for PETS

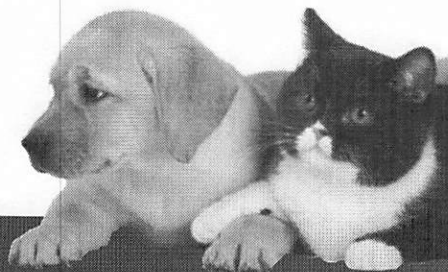
Professional Veterinary Formulas

# Liquid Immuno

*Delicious, Easy-to-Deliver, Bacon or  
Chicken Flavored Liquid!*



## Lysine Combined With Immune-Enhancing Nutraceuticals



Formulated by

**Robert J. Silver, D.V.M., M.S., C.V.A.**



# Liquid Immuno

## Lysine Combined With Immune-Enhancing Nutraceuticals

**Liquid Immuno** provides pharmaceutical grade L-lysine and state-of-the-art nutraceuticals designed to promote optimal immune system function. The inclusion of L-lysine with larch arabinogalactan and reishi mushroom offers significant therapeutic value for many chronic and acute immune challenges. Liquid Immuno is delivered in a highly palatable, liquid format which will improve compliance for small-sized, "fussy" patients.

**Net Wt. 2 Fl. oz (60 ml) or  
Net Wt. 4 Fl. oz (120 ml)**

### 2 ml Contains:

L-Lysine (pharmaceutical grade) .....	500 mg
Larch Arabinogalactan (larix occidentalis extract) .....	100 mg
Reishi Mushroom (ganoderma lucidum) .....	50 mg
Lutein (bioactive carotenoid) .....	3 mg

### Recommended Usage:

For use in patients less than 5 lbs: 1 ml twice daily.  
For use in patients greater than 5 lbs: 2 ml twice daily  
or as recommended by your veterinarian.

***Delicious, Easy-to-Deliver,  
Bacon or Chicken Flavored Liquid!***

**Rx Vitamins<sup>®</sup>**

***for PETS***

*Professional Veterinary Formulas*

**800-792-2222**

150 Clearbrook Road Suite 149 Elmsford, NY 10523 USA  
914-592-2323 Fax: 914-592-2364

[www.rxvitamins.com](http://www.rxvitamins.com)